



## January 2022 – December 2022 ANNUAL REPORT

### Nakayale Private Academy for Orphans & Marginalised Children



# CONTENTS

Our mission	[3]
Our vision	[3]
Our history	[3]
<b>Section 1 – An overview of Nakayale Private Academy</b>	
About us	[4]
Our people	[5]
Our supporters	[6]
<b>Section 2 – Governance</b>	
Structure & management	[9]
Director's report	[11]
<b>Section 3 – Our Finances</b>	
Financial statements	[18]
<b>Section 4 – Our other important information</b>	
Acknowledgements	[23]
Contact us	[23]

## Our mission

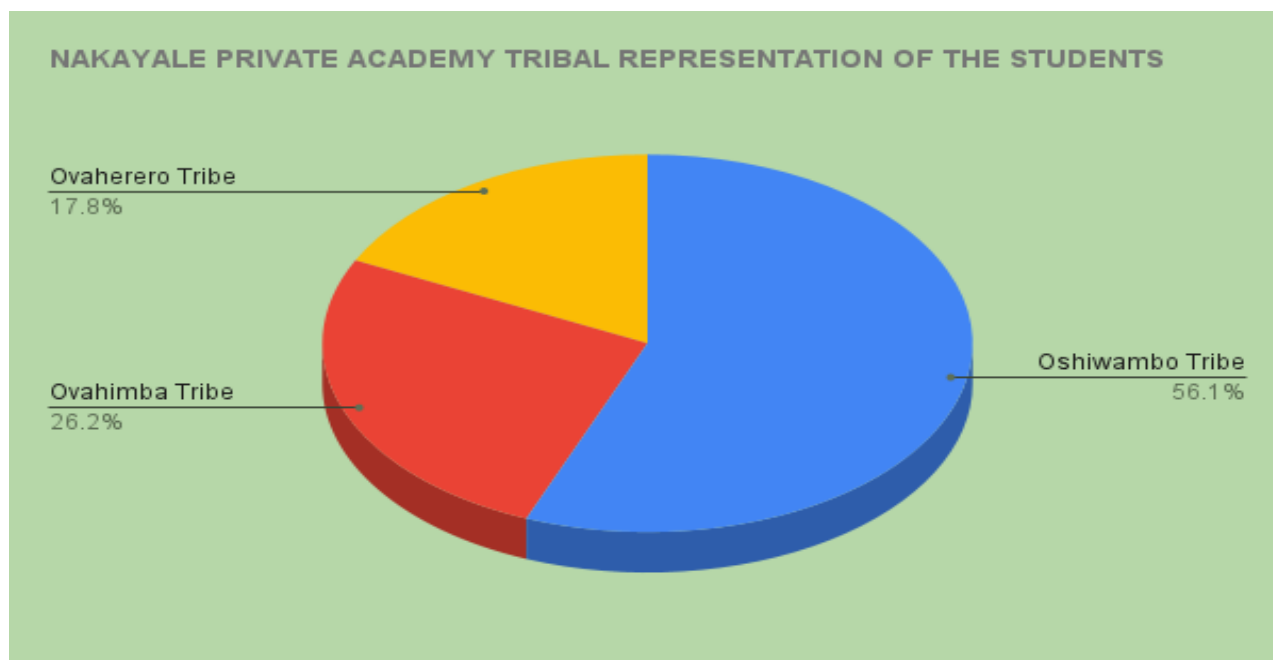
To create a society free of exploitation, discrimination, and violence, to enable it to reach its ultimate socioeconomic potential.

## Our vision

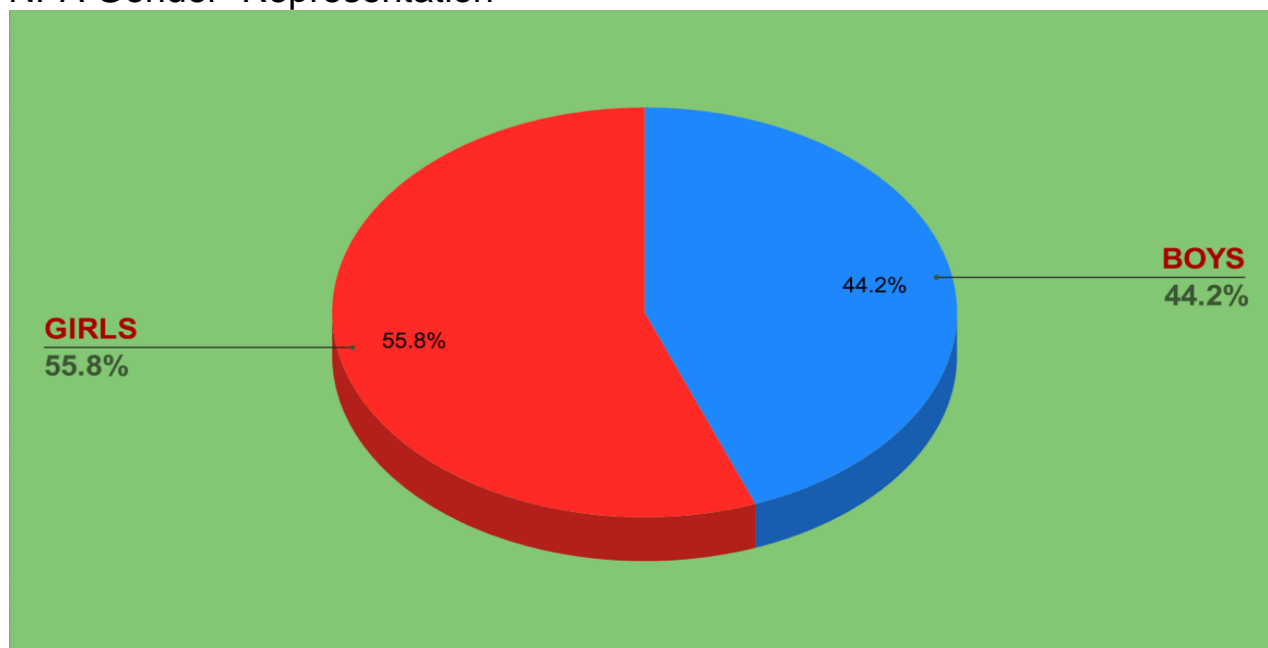
To bring about substantial improvement in the lives of disadvantaged people/children with special emphasis on their education and nourishment

## Current Enrolment

Currently Nakayale Private Academy has 107 children(7 classes) and 11 qualified teachers and 21 ancillary staff.



## NPA Gender Representation







**SECTION 1****AN OVERVIEW OF NAKAYALE PRIVATE ACADEMY FOR ORPHANS & MARGINALISED CHILDREN****ABOUT US****Challenge**

The remote villages in the deep rural areas of Namibia are extremely poor, illiterate, and cut off from the world. Locked in a perpetual loop of archaic existence, they are so far away from the nearest school that the distance cannot be covered twice a day and children simply fall off the grid of society, unable to realise their potential and deprived of any possibility to ever change the trajectory of their communal destiny. By implication the collateral socio-economic damage of poverty and ignorance is the status quo: hunger, alcoholism and violence, inhumane traditional customs and rituals, sexual abuse, and a stolen life.

**Solution**

The only way to break the cycle and give the children a chance to change their destinies, is to provide a safe, nurturing and enabling environment where they are protected from all the elements and introduced to a holistic education, care and development programme that includes first-class education, healthcare, clean, running water, sanitation, nutritional food, clothing, medical care, sports training, art, music and exposure to the world beyond their village. This requires complete, 360-degree, full time care of these children for the entire academic year. Nakayale Academy for Orphans and Marginalised Children is not a school. It is a living, growing experiment of possibility and an incubator of hope.

**Long-Term Impact**

In addition to transforming the lives and creating a future for the children of the school, communities and families have been inspired by the substantial transformation that they witness in the children who attend the school.

More importantly, Nakayale Academy for Orphans and Marginalised Children is developing a credible, internationally recognised model for education for marginalised children in rural Africa with a documented, proven records of success, the result being secondary school certification that is on par with the best in the world.

Proving that it is possible to train teachers without formal qualifications on the job, whilst assisting them to study towards formal teaching qualifications as part of their employment agreement can change perceptions about perceived challenges that prevents education from happening in rural areas for marginalised communities.

The effect reaches far beyond the school itself, with Nakayale providing support to other teachers in the region who often have to work in isolation, many of them under trees with no learning material or resources. Nakayale assists with basic physical resources, training, and support through a WhatsApp network where possible.

## OUR TEAM

### Board members/Trustees *(New board to be selected)*

Name	Position	Date Started
Christine M Greeff	Chairman	2014
Carmen De Villiers	Director	2016
Bason A Johannes	Director	2016
Stefan Hugo	Director	2016

### Employees

Name	Position	Date Started
Chagwambare Kudzanai	Education Manager	January 2018
Josphine Shoovaleka	Principal	January 2016
Ndamono Hileni Kahumba	Senior HOD	January 2016
Ernita Van Tonder	Administrator	August 2022
Theopolina Shikongo	School Matron	January 2016
Veronika Nambondi	Teacher	January 2018
Diina Mulunga	Teacher	January 2018
Florian Josephine	Teacher	January 2018
Shanuna M Tonateni	Teacher	January 2020
Kabende Isaac	Teacher	January 2022
Persuade Gwaba	Teacher	March 2019
Tuhafeni Johannes	Assistant Teacher	January 2020
Lydia N Murangi	Teacher	March 2023
Sofia Absai	Hostel Cleaner	January 2016
Rebbeka Fikunawa	Hostel Cleaner	January 2016
Hilaria Hamutenya	Laundry	January 2016
Angelina Hishekwa	Laundry	January 2016
Anita Nangolo	Hostel Cleaner	January 2016
Simon lita	Maintenance	January 2016
Lydia Kornelius	Kitchen	January 2016
Jason Mbwale	Security	January 2016
Linda Mulamba	Cleaner	January 2016
Felesimina Ndemoongela	Security	January 2016
Shilondelo Hipandwa	Security	January 2016
Johannes Nehale	Security	January 2016
Daniel Nkandi	Maintenance	January 2021
Selma Nuuyoma	Kitchen	January 2016
Rauna Pendukeni	Hostel Cleaner	January 2016
Maria Shigwedha	Security	January 2016
Lydia Uunona	Cleaner	January 2016
Uukongo Nghutungu	Gardener	November 2022
Laimi Katelehingo	School Secretary	January 2023



			
<p><b>K Chagwambare</b> Education Manager</p>	<p><b>Josophina Shoovaleka</b> Principal</p>	<p><b>Ndamono H Kahumba</b> Senior HOD</p>	<p><b>Theopolina Shikongo</b> Hostel manager</p>
			
<p><b>Veronika Nambondi</b> Class Teacher</p>	<p><b>Shanuna M Tonateni</b> Class Teacher</p>	<p><b>Diina Mulunga</b> Class Teacher</p>	<p><b>Florian Josephine</b> Class Teacher</p>
			
<p><b>Isaac Kabende</b> Class Teacher</p>	<p><b>Tuhafeni Johannes</b> Assistant Teacher</p>	<p><b>P Gwaba</b> Mathematics &amp; English</p>	<p><b>Lydia Murangi</b> Class Teacher</p>





*Mrs. Ndamomo Kahumba (Heard of Department)*

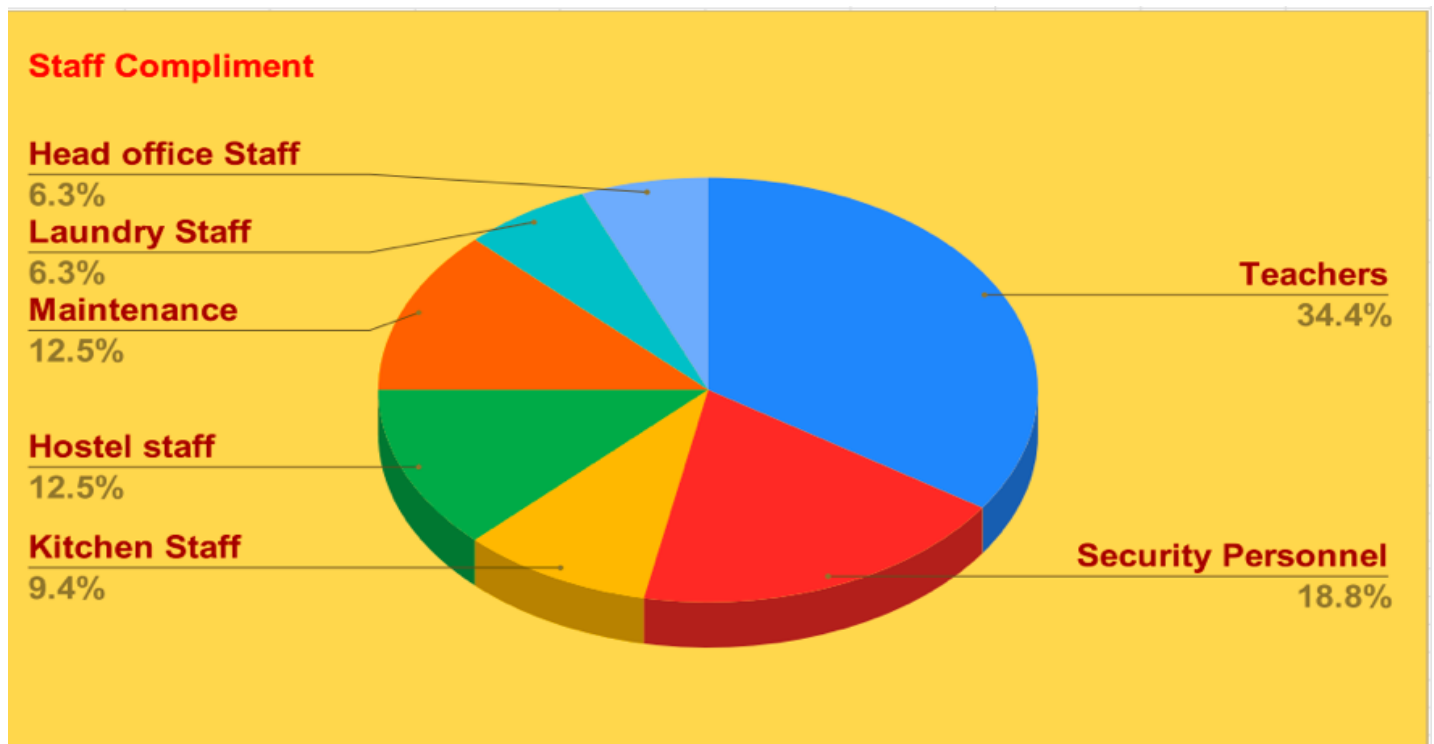
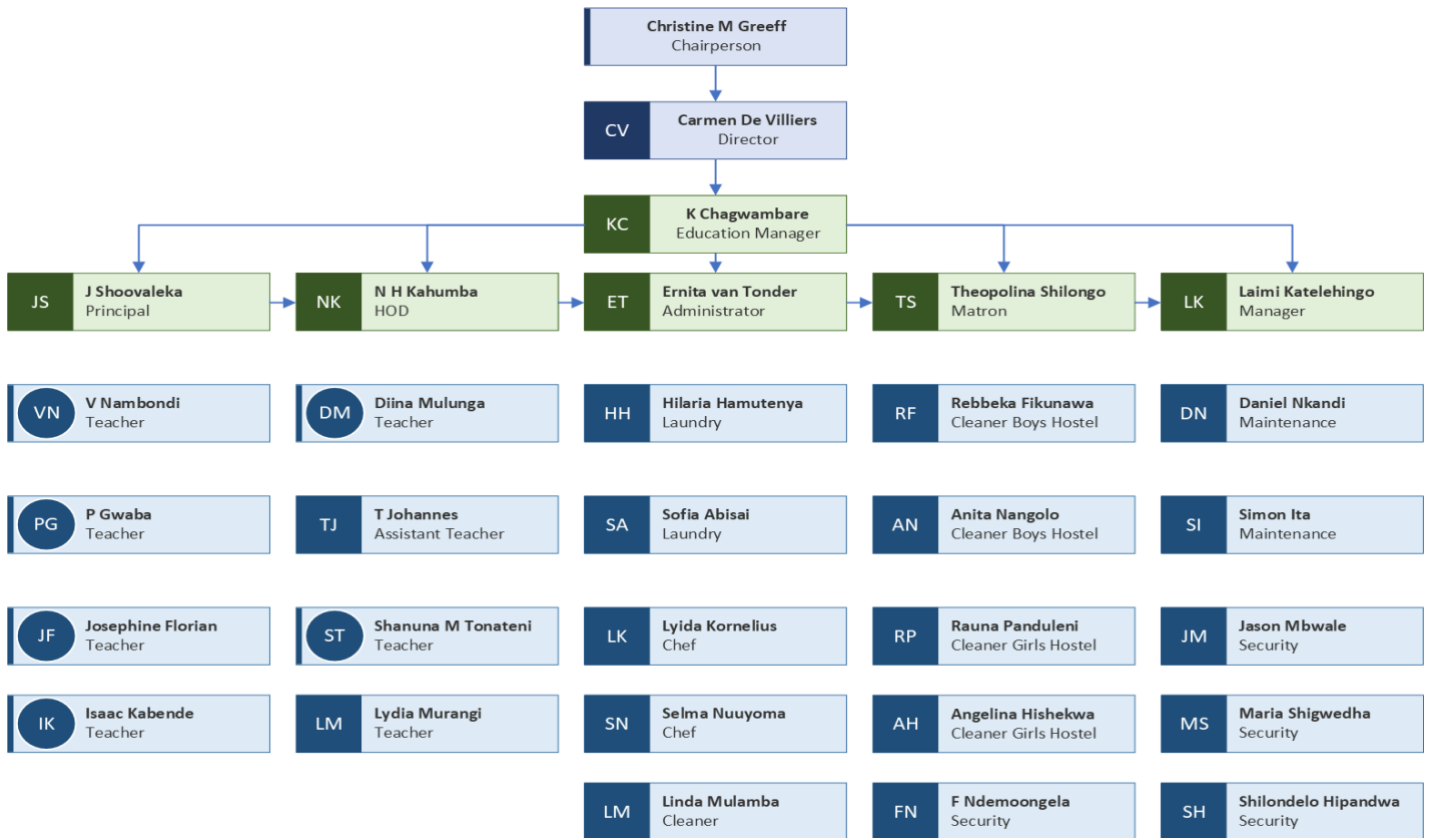


*Grade 6 class posing for a photo.*



STRUCTURE & MANAGEMENT

Nakayale Private Academy is registered with the COMPANIES ACT 2004 (sections 224(2),284,328(1) and 333(1))(Regulation 46(1)) of Namibia.







## SCHOOL DIRECTOR REPORT



**Carmen De Villiers, Director**

In 2022, we continued to navigate the challenges of running a charity school with increasing financial needs and price hikes in all industries that contribute to the smooth operation of the school. While remaining committed to offering improved quality of education and upgrading systems at the school. Thanks to the continued commitment of all the investors, ConTine gGmbH, B2Gold, FNB and various smaller funders, we successfully managed to maintain the high level of quality on all levels at Nakayale.

Nakayale has, through the support of ConTine gGmbH, implemented the STEAM(Science, Technology, Engineering, Arts and Mathematics) approach to teaching.

Nakayale invested, through the support of ConTine gGmbH to buy 250 mango trees. 104 of them are in the ground. The remainder of the trees will be planted once the water supply issue has been resolved. We are still in the process of planting them, staggered. We hope that in the next 5 years, these fruits may be harvested and sold in various forms to the public.

The school has also been nurturing a garden for the use of the school kitchen. The children at Nakayale are learning about seasonal crops and how to plant, nurture, harvest and cook these crops.

ConTine gGmbH has linked Nakayale with EduVentures and through collaboration, we have been working with them in training teachers in the Omusati and Kunene region. EduVentures sponsored the network infrastructure worth N\$115 000 as well as a Smart board worth N\$70 000.

Without you and the kindness of so many, we could not support student success, upgrade our systems and facilities and deepen relationships with our community. Please accept my sincerest thanks for all you do for Nakayale. I look forward to sharing more exciting adventures with you.



*Sophia (EduVentures) and Kudzanai (Nakayale Private Academy)*



## OUR OBJECTIVES AND ACTIVITIES

### School garden and the Mango Tree project(N\$ 102 213.00)

In our quest to conscientize our children on food security in their communities and nation. Nakayale Private Academy with the help of ConTine gGmbH established a school garden. The intention is to help children understand the need for food and the nutritional value of gardening their own vegetables. ConTine's aid helped in hiring a professional gardener and procuring materials for the construction of the school garden.

#### Materials procured:

- Fence
- Poles
- Cement for the tank stand
- Inputs
- Organic manure
- Garden equipment









## Mango Tree Project

With the aid from ConTine gGmbH, we developed 2 hectares of mango tree orchard. We will plant 500 plants of mango trees. Currently we have planted 104 mango trees. Each child will have a responsibility of looking after his or her plant. The next phase 396 more plants will be planted by the end of April. We delayed planting the whole plot, due to water supply. Thanks to ConTine gGmbH, we will be placing 4 X 10000 litres tanks in the middle of the field to water all the plants using floppy irrigation system.



*NPA children planting the mango trees.*





## NAKAYALE PRIVATE ACADEMY STEAM PROJECT(N\$228 800)

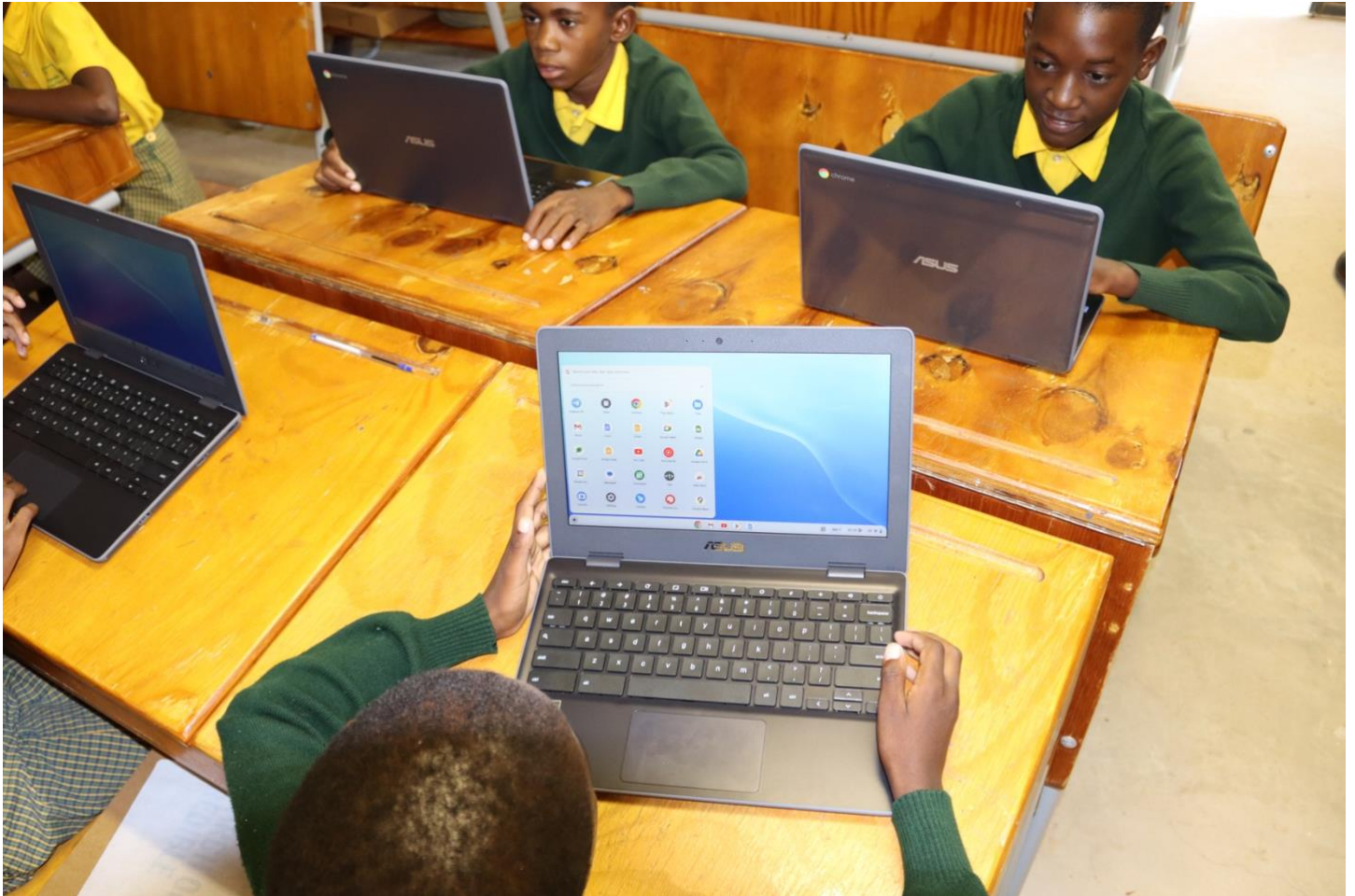
In our effort to educate competent students, ConTine gGmbH donated 13 thousand Euros equivalent to N\$228 8000.00 towards the establishment the STEAM(Science, Technology, Engineering, Arts and Mathematics) centre. STEAM is an educational approach that incorporates the arts into the more familiar STEM model, which includes science, technology, engineering and mathematics. STEAM programs can include any of the visual or performing arts, such as dance, design, painting, photography and writing.

The donated funds were used in the procurement of the following:

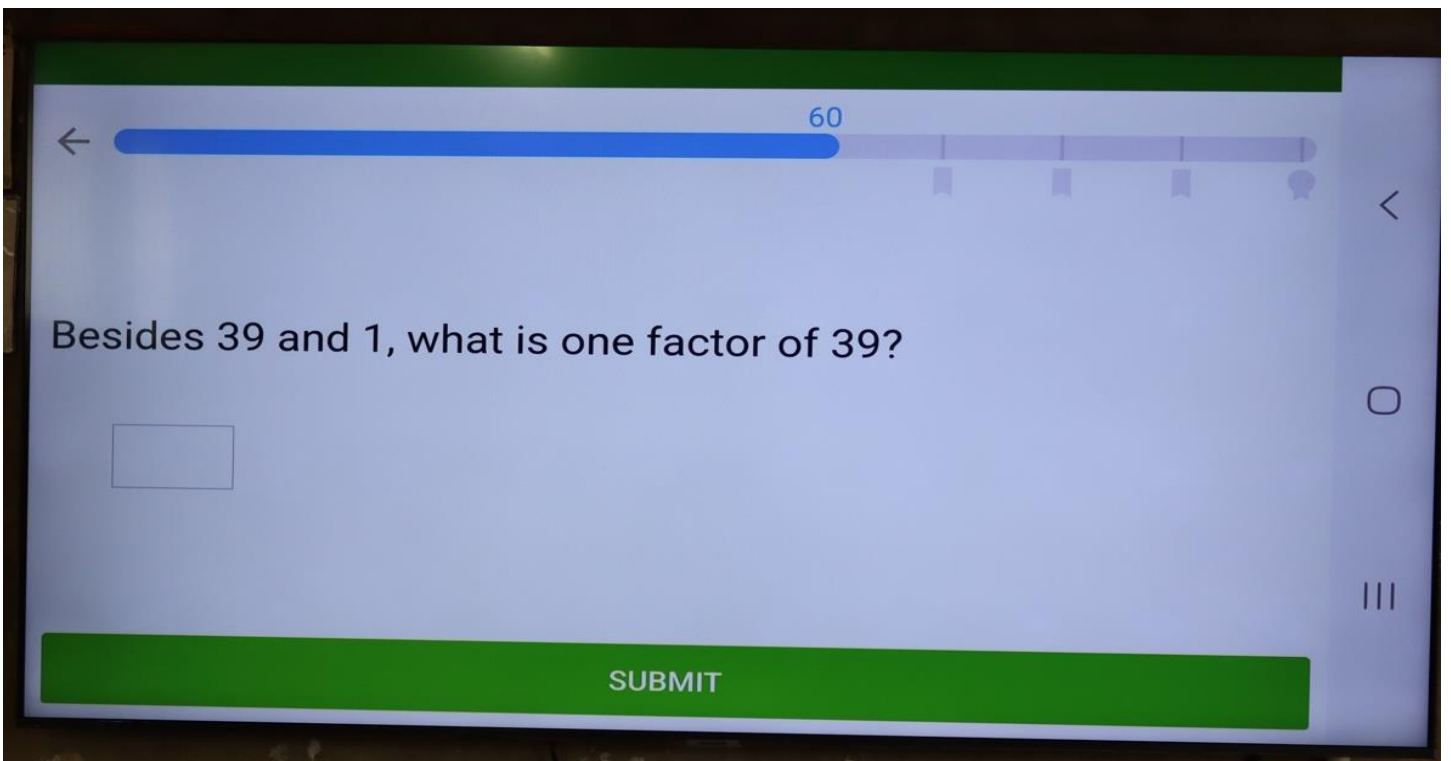
- **Chromebooks and science kits**
- **Smart Tv's**



*Grade 7 class using chromebooks being used in the classroom.*



Grade 6 children accessing the menu of the chromebooks.



Samsung Smart Televisions(TV) being used in the classroom.





Ms V Nambondi working with grade 6 children



## FINANCIAL STATEMENTS

### NAKAYALE PRIVATE ACADEMY MANAGEMENT ACCOUNTS FOR THE PERIOD 01/03/2022 - 28/02/2023

### NAKAYALE PRIVATE ACADEMY BALANCE SHEET FOR THE PERIOD MARCH 2022 - FEBRUARY 2023

+	
<b>Assets</b>	
<b>Non-Current Assets</b>	
Fixed Assets - Equipment	N\$1,085,000
Fixed Assets - Furniture & Fittings	N\$1,053,000
<b>Total Non-Current Assets</b>	<b>N\$2,138,000</b>
<b>Current Assets</b>	
Petty Cash Account	N\$213
FNB Bank Account	N\$384,988
Educational Materials	N\$154,008
<b>Total Current Assets</b>	<b>N\$539,209</b>
<b>Total Assets</b>	<b>N\$2,677,209</b>
<b>Equity and Liabilities</b>	
<b>Equity</b>	
Profit and Loss (This Year)	N\$12,633
Retained Income	N\$36,738
<b>Total Equity</b>	<b>N\$49,371</b>
<b>Non-Current Liabilities</b>	
	-
<b>Total Non-Current Liabilities</b>	-
<b>Current Liabilities</b>	
Trade Payables - Stier Vente Audit Account	N\$65,000
VAT Payable - VAT PIAD UP of AGRI ACCOUNT	-
Income Tax Payable- Not Applicable to Section 21	-
<b>Total Current Liabilities</b>	<b>N\$65,000</b>
<b>Total Equity and Liabilities</b>	<b>N\$114,371</b>

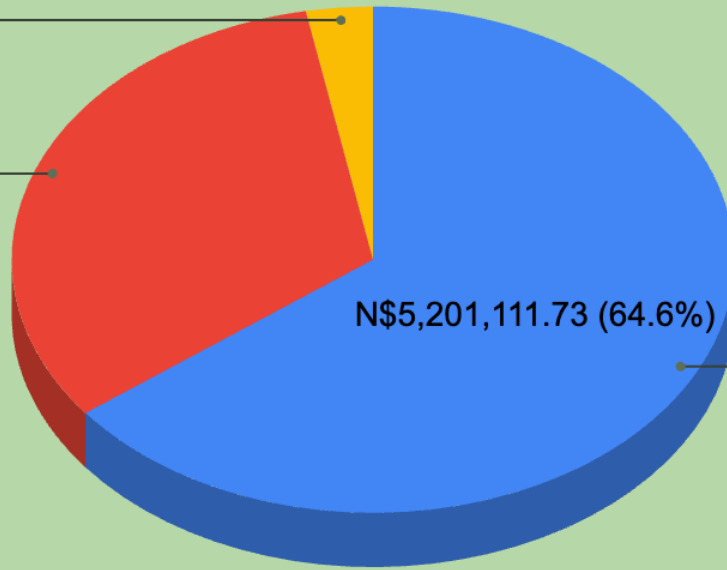
**INCOME STATEMENT FOR THE PERIOD OF  
01 MARCH 2022 - 28 FEBRUARY 2023**

Income derived from funding	<b>N\$6,175,008.00</b>
Total Expenditure	<b>N\$6,162,375.00</b>
Audit Fees	<b>N\$66,500.00</b>
Accounting Fees	<b>N\$42,000.00</b>
Advertising	<b>N\$7,561.00</b>
Bank Charges	<b>N\$20,368.00</b>
Computer Software Sage Pastel and VIP	<b>N\$11,088.00</b>
Educational Material	<b>N\$65,000.00</b>
Electricity & Water	<b>N\$34,128.00</b>
Groceries	<b>N\$577,116.00</b>
Insurance	<b>N\$61,200.00</b>
Medical Aid	<b>N\$81,708.00</b>
M/Vehicle Fuel & Oil	<b>N\$127,576.00</b>
Napwu	<b>N\$9,096.00</b>
Office Rent	<b>N\$30,000.00</b>
PAYE	<b>N\$878,268.00</b>
Printing & Stationery	<b>N\$73,983.00</b>
Rental of Copier	<b>N\$17,730.00</b>
School Uniforms and Clothing	<b>N\$45,000.00</b>
Salaries & Wages	<b>N\$3,998,064.00</b>
Social Security	<b>N\$2,403.00</b>
Telephone & Internet	<b>N\$13,586.00</b>
<b>Net Profit/Loss</b>	<b>N\$12,633.00</b>

# Nakayale Private Academy Donor Contribution

FNB Namibia  
3.0%

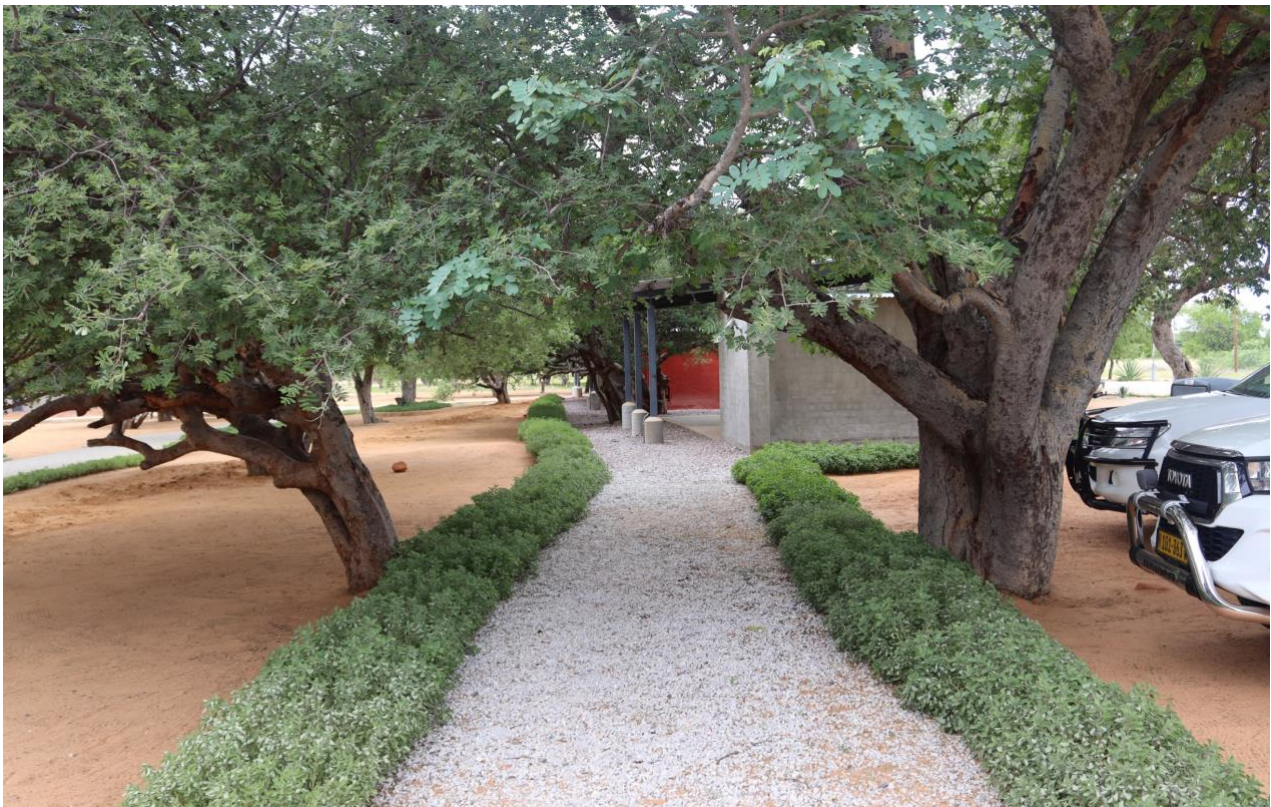
B2gold Namibia  
32.4%



ConTine  
64.6%







**SECTION 4**

**OUR OTHER IMPORTANT INFORMATION**

**ACKNOWLEDGMENTS & THANK YOU**

# Donors







## **CONTACT US**

P O BOX 199 Oshifo, Ruacana

+265 25 9606

[www.nakayale.academy](http://www.nakayale.academy)

[carmen@nakayale.academy](mailto:carmen@nakayale.academy)

Facebook: @NakayaleAcademy