



Progress Report 2023

'walking the talk', one step at a time

PREPARED FOR



BY THE

Wolwedans
FOUNDATION



Message from the Chairman

Progress Report for ConTine 2023 Facilitating a Sustainable Future for Wolwedans The AridEden Project – Wolwedans Vision 2030 & Beyond

We are delighted to present this Progress Report to ConTine, one of our valued partners in realizing the AridEden Project - Wolwedans Vision 2030. With your unwavering support over the last three years, we have been able to step closer towards our shared goal of creating more resilient tourism and conservation economies. In particular with regards to Horticulture training and capacity building, which we believe is one of the most relevant engagements of our time - in terms of food security and cutting food miles and hence Carbon footprint.

As we report on the progress made towards the projects in 2023, we cannot help but express our gratitude for your generous second round of funding towards Horticulture Training. The second compact in 2023 – with funds received in October - helped us to obtain the long awaited accreditation, paid for necessary equipment, contributed to the classroom and tractor downpayment, and most importantly, will help to complete the first Level 3 intake, during November 2024.

Your belief in our vision has been an essential part of our success, and we are excited to share with you the strides we have made in achieving our goals.

At Wolwedans, we believe that we all have a responsibility to effect positive change for the planet, future generations, and each other. And through 'The AridEden Project', we have taken on this responsibility, showcasing that "business for good" can indeed work.

To achieve this Vision, we will continue to be guided by our "5Cs" - Conservation, Community, Culture, Commerce, and Consciousness" - to ensure that we maintain a mindful awareness of balancing people, planet, and profit.

For each of the 5Cs we have defined activity areas, i.e., projects and programmes, resulting in a 5 x 5 matrix or "Matrix | 25", as we call it.

Underpinning all of this is the necessary pursuit of happiness for people (including guests, team and community), the environment, and the financial bottom line of the Wolwedans Collection, the commercial arm of Wolwedans and the Foundation.

We are committed to share our journey, including challenges experienced along the way, lessons we learn, and successes enjoyed by our team's efforts. It is our hope that this will inspire others to act and advance our collective progress towards systems that thrive.

We are confident that the AridEden Project could become a blueprint and lighthouse project, inspiring sustainability solutions not only in Namibia but also globally. And with partners like you, we know that we can make it happen.

As humanity faces a pressing need for action, Wolwedans is committed to doing our part, and we are grateful to have secured committed strategic partners who are supporting us in this endeavor.

We cannot shoulder this mission alone, and we invite others to join us in making The AridEden Project – Wolwedans Vision 2030 a reality. As Edward Abbey said, "Sentiment without action is the ruin of the soul." Let's not wait any longer to take action and make a difference.

Thank you, and happy reading.

Stephan Brückner
Chairman Wolwedans Foundation
Windhoek, Namibia



Projects where ConTine was active in 2023

During 2023 the ConTine engagement was consolidated into Horticulture Training. The other four areas funded during 2021 and 2022 - to name water bottling, solid waste facility (The Gallery), tree project and solar system for water pumping - are now all fully operational. Water bottling, sale of dsolar generated energy ad esp tree sales/adoptions have generated handsome income for the Foundations' AridEden Project.

Matrix | 25 | The AridEden Project | Wolwedans Vision 2030

CONSCIOUSNESS	CONSERVATION	COMMUNITY	COMMERCE	CULTURE
Advocacy Creating awareness through media (digital, print & events), embedded journalist, workshops (through l3Lab)	Regenerative Agriculture Growing organic vegetables and fruit in the Daweb Constituency and cutting food miles	Education Support Education Assistance Fund, Waldorf & Dabeb schools support, NaDEET	Wolwedans Collection Running lodges & camps, including future development & experiences	Wolwedans Way Internal Wolwedans culture: Purpose Values Compass Lifelong Learning Happiness
Heart & Home Experience Wolwedans Village and its operations in action: transparent and hands-on	Habitat Expansion & Consolidation Facilitation of additional habitat acquisition within and on the periphery of NamibRand	SME Development Small enterprise development: entrepreneur / creativity centre, manufacturing, food production	Desert Based Economy (DBE) Drive DBE concept & inclusivity in the region, EconoMix, empowerment, SME Development	Visual Arts Art studio, artist in residence, art instruction, land art, events and
Slow Food Becoming more consciousness about what we eat and where the food comes veggies and meat..	Resources & Waste Renewable energy, fresh water and waste water Solid Waste Management (Trash to Treasure)	Vocational Training Desert Academy NICE: Hospitality, Horticulture, Facility Maintenance	Village Stays Training hotel & guesthouse in Wolwedans Village, generating Foundation income	Performing Arts Music Choir Drumming Plays Spoken word Poetry
Retreats Mind, Body & Soul: health happiness spirituality & mindfulness family corporate	Tree Project Indigenous tree and plants: nursery, plant sales and large-scale tree planting project	RuralRevive Community Development: laundry, water, energy, horticulture, LifeSkills, clean-up	Horticulture & Animal Husbandry Nursery, sustainable fruit and vegetable as well as livestock farming, with value addition for (DBE).	Cultural Festival Celebrating culture, tradition, folklore during annual Winter Games & Winter Cup
Experiences Crafting individual and team activities that 'feed' Head Hand Heart	Large Landscape Rehabilitation & beautification, GSNL (Greater Sossusvlei Namib Landscape) engagement and support.	Team Well-being Board & lodging, recreation and sports, Winter Games, Wolwedans Winter Cup	Merchandising Commercial development of locally-made uniforms, leisure wear, accessories	Heritage Built, cultural & natural heritage respected, preserved (site restoration, traditional dress-making, etc.)

ConTine fields of involvement within the MATRIX | 25 during 2023 and past

Strengthening the AridEden Project with the kind support from the ConTine Foundation

Since the start of the collaboration, ConTine has pledged funding into five main areas. To name; a 17 kW solar farm, a water bottling plant, a tree nursery supplying the tree planting initiative, the initial stage of the waste management facility and Horticulture. Whilst the first four were all completed during 2022 and are now operational, the main focus during 2023 was on Horticulture Training and accreditation. Hence, a status on the first four fields of engagement is provided, whilst the main 'reporting' covers Horticulture Training. More detail with regards to input | output | impact etc. can be obtained from the 2022 report. We felt there is no need to repeat all this information.

Energy



The SolarFarm was erected on the roof of the stores and feed directly into the grid. Energy consumption from this particular farm is measured on a quarterly basis and invoiced by the Foundation to the business.

December 2021 the Wolwedans Foundation was able to install a new 17kWh solar grid feed system, which included upgrading the existing system to allow for grid feed and the installation of two more energy efficient water pumps. Energy generated from this solar power farm is sold to NamibRand Safaris, the commercial entity of Wolwedans, for income for the ArifEden Project.

Output 2023

- During 2023 some 20.000 kWh were generated from this installation. At NAD 5,-/KWh, an income of NAD 100.177 was generated for the Wolwedans Foundation and paid by NamibRand Safaris. Strictly speaking this amount should be shared between the Foundation and NamibRand Safaris, for 2023 it was decided to let NRS settle the whole amount.

Water Bottling Plant



A special bottling room was built close to the pump house in late 2021 to house the bottling plant in a hygienic environment. In early 2022 the bottling plant comprising a filling machine (still and sparkling) as well as a dish-washer were installed and finally went into operation in October 2022. In addition to branded water bottles, Wolwedans now starts using recycled wine bottles (obtained from the recycling plant) to be filled with juices and ice-tea. Above Kaino Angula (Wolwedans Sustainability Coordinator) explains the workings of the bottling plant to guests doing a Heart&Home tour.

This facility was installed with generous funding from ConTine to firstly address the issue of environmental pollution caused by the excessive use of plastic water bottles - in 2019 Wolwedans consumed some 70.000 PET bottles - and secondly, to create a funding mechanism to support the Wolwedans Foundation's AridEden Project with special emphasis on Horticulture Training.

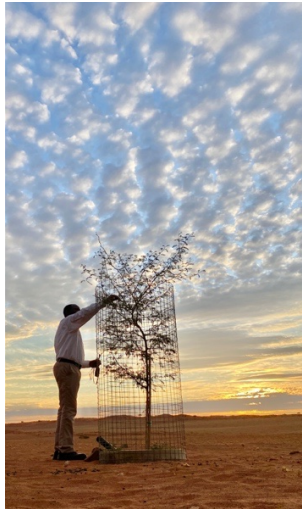
The water bottling facility at Wolwedans - operational since October 2022 has filled and distributed some 17.000 bottles during 2023, which were sold to NamibRand Safaris for NAD 50.000+. Break-even of this project (re-couping investment) is envisaged for mid 2025.

In the latter half of 2024 the water bottling plant will be expanded by a 'Juice&Ice Factory' where large quantities of bottled prickly pear and lemon juice as well as ice-tea will be bottled, cooled and stored for distribution for the Wolwedans tourism outlets, together with an ample supply of ice-cubes. As of mid 2023 all minibars at the camps as well as the honesty fridge at the village are stocked with these low-carbon drinks instead of canned and bottled juices and fizzy drinks imported from South Africa, reducing waste and carbon footprint significantly.

Output 2023

- During 2023 some 16.900 bottles of water were filled at NAD 3,-/bottle, generating an income of NAD 50.680 for the Wolwedans Foundation. These figures are expected to double in 2024 once all camps are operational again post COVID.

Tree Project



A tree planted at Plains Camp in March gets some TLC (tender, ove and care) from Sakkie the good valet of Plains, who is very fond of his little forest. Right: A tree – Acacia Galpinia – grown from a seed at Wolwedans - was gifted and planted by the Chairlady of the Maltahöhe Village Council on the occasion of the first birthday of RuralRevive, a community revitalization initiative in Daweb, conceptualized under The AridEden Project and driven by the Wolwedans Foundation. Tree planting will form an integral part of RuralRevive. This would not be possible without first steps taken and experience gained at Wolwedans.

The tree project is an ongoing initiative. Sales at the latter half of 2023 slowed down, probably because the main tree seller Jonathan Nasngombe left Wolwedans. 2024 will see the printing of some collateral for the rooms and should see an increase in sales, albeit we think the funds collected to date are not too bad.

One challenge is to produce enough manure/compost (we need a good 100li per tree), and efforts are underway to scale up the availability of this resource from RuralRevive and Mariental. To make room for young trees which have been raised from seed at the seedling nursery, the tree nursery was expanded in late 2023 with the aim to put big trees into 100li bags (instead of 20 li bags currently used) in the harsh sun and to grow them to 3 meter an higher to have a more 'instant' result. Such trees could also be sold to nurseries in Windhoek one day.

For 2024, different species of trees – in particular the indigenous White Karee (Pendulina) - will be introduced to have a greater variety of trees at Wolwedans and different times of flowering to ultimately keep the bees happy and well nourished.

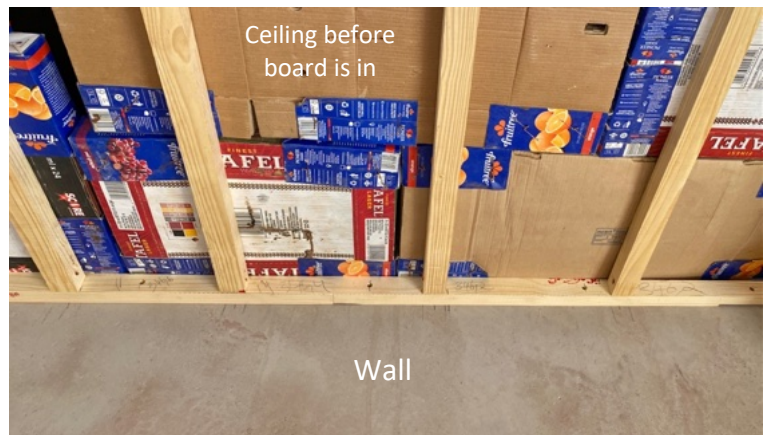


Trees are adopted by Wolwedans guests for NAD 5.000 (roughly EUR 250) and planted with the team in and around Wolwedans Village and lately the camps, starting at Plains. A brass plaques commemorates this special moment and helps guests to find their tree if they return.

Output 2023

- 37 trees adopted/sold generating an income of NAD 185.000 (2 trees gifted to RuralRevive).
- In total – since the start of the tree project - some 111 trees were sold, generating an income of NAD 500.000 for The AridEden Project | Wolwedans Foundation.

The Gallery – Wolwedans Solid Waste Facility



Top: Kaino Angula Sustainability Coordinator at Wolwedans (right) explains the workings of the Waste Management Facility (The Gallery) to a delegation of African Longrun members. There is not one person who is not impressed by the next level of recycling (re-purposed/reuse) at Wolwedans. The Gallery is becoming a 'Center of Excellence' and will make people very aware of waste, circular economy concepts and hence create consciousness for one of the most pressing global issues.

Bottom: Recycling in action. Discarded cartons are sorted and stacked and converted into insulation panels for ceilings. All new buildings at Wolwedans are insulated in this way, instead of Polystyrene, which is manufactured in Otjiwarango, some 700km away from Wolwedans.

The Gallery is fully operational now and attracts major interest. Every guest who is taken there, ranging from tourists to agents and Namibian visitors are astonished with what they see. "Next Level" would describe this Center of Excellence in the making. Wolwedans certainly sets a very high industry benchmark which will hopefully other operators to follow suit.

Waste management and Recycling is also a major work-package with the RuralRevive Project. Again, valuable experience gained at Wolwedans will benefit Maltahöhe and the way things are managed there.

2024 will see an expansion of the waste facility. A scale will be installed to monitor and quantify waste – a requirement by the ongrun – and more shaded storage area for full white waste bags is needed.



HORTICULTURE CLASS OF 2023 | LEVEL 3 | WOLWEDANS DESERT ACADEMY | HARDAP REGION | NAMIBIA

From left to right: Mathilde Kandume | Sharon David | Dephni Oases | Uatezovakuao Tjituezu | Peter Kamati | Elsie Shikongo | Ester Katambo | Emerson van Rooi | Martha Paulus | Kauko Rutjan | Undjizuva Karaerua | Ndinelao Medusal

Horticulture training pilot program (Period: March - December 2023)

The pilot training program for Horticulture & Crop Husbandry at Wolwedans Desert Academy which commenced in October 2021, is ongoing, and provides young Namibians with a fully sponsored training opportunity – thanks to ConTine.

The aim of the pilot program is to establish, in addition to the already functioning hospitality training, a fully equipped training centre for horticulture & crop husbandry and crop production. Further, the Wolwedans Desert Academy aims to broaden the Wolwedans Foundations scope of accreditation at the Namibia Qualification Authority (NQA), the registration with the Namibia Training Authority (NTA) was approved in October 2023.

This section will focus on the achievements and challenges that the foundation faced in 2023 during the course implementation.

Achieved results

Job attachment

All enrolled Horticulture & Crop Husbandry Level 2 Trainees have been sent to one month of external job attachments at our partnering farms in April 2023 (details on the partners below). This activity was very successful and received positive feedback from trainees who enjoyed the change of environment and could gain valuable skills during the work integrated learning at real agricultural businesses. Our facilitator Theresia Shifiona has conducted field visits at all job attachments places and has also received positive feedback from the farmers who accepted our trainees. The conditions at all chosen farms were acceptable and safe, however, we will review the selection of job attachment farms for the next round of job attachments (please see the field visit report attached).

Training and assessment

- I. All enrolled Desert Academy trainees have received a compulsory life skill training on Entrepreneurship by an external expert for social entrepreneurship. This was a great success, and the trainees could gain valuable knowledge for setting up their own businesses.
- II. All enrolled Horticulture trainees were externally assessed by the NTA in August 2023 on the national qualification for Horticulture & Crop Husbandry Level 1 & 2. Most assessed trainees passed all assessment activities, only one trainee failed one practical activity and will be re-assessed at the next opportunity in 2024 (please find official group results attached).
- III. After the successful Level 2 assessment, the Wolwedans Desert Academy offered all successful Level 2 graduates to continue with the Level 3 program, all six remaining trainees enrolled in this course. To fill up the group to its initial trainee number of 12 trainees, the Desert Academy recruited six additional trainees who have obtained the Horticulture Level 2 qualification elsewhere. The Level 3 training program "Horticulture & Crop Production" commenced successfully in October 2023, the new trainees have blended in well and we are pleased with the selection.

Namibia Training Authority (NTA) registration

The Wolwedans Desert Academy has received NTA registration for the agriculture qualifications Horticulture & Crop Husbandry Level 2 and Horticulture & Crop Production Level 3 in October 2023 (please see certificate attached). Herewith, the Desert Academy is officially mandated to train and assess trainees in the mentioned qualifications and NTA funding can be received. This is a huge milestone which was only be achieved with the support of our main sponsor ConTine.

Namibia Qualification Authority (NQA) accreditation audit

The Wolwedans Foundation has applied for re-accreditation for Hospitality & Tourism with expansion of scope to Horticulture & Crop Husbandry/ Production and was finally audited by the Namibia Qualification Authority (NQA) in March 2023. Although that we have applied for re-accreditation, specifically with expansion of scope to Horticulture, the audit panel unfortunately did not consist of a subject matter expert for agriculture and thus, the feedback on the application for agriculture was insufficient. The foundation has arranged with the NQA to have the trade expert coming to Desert Academy for an audit inspection in early 2024. We, therefore, trust that also NQA accreditation will be received in 2024.

Establishment of partnerships

In addition to the already existing partnerships with farms from the Hardap region, the Desert Academy could arrange a new partnership with AGRIBUSDEV Mariental Green Scheme Project, for the purpose of tractor training. As our own tractor and its implements has not been delivered to the time of the Level 2 assessment in August 2023, AGRIBUSDEV has availed us with a tractor including tillage equipment and operator for training our trainees on the tractor assessment activities. The NTA tractor assessment was also conducted at their premises at Mariental. This agreement was crucial to avoid any assessment delays and we are thankful for AGRIBUSDEV's assistance.

The below listed farms are officially Wolwedans Foundation training partners and have agreed to cover the following training activities:

Commercial farms

- ✔ Farm Krumhuk - Crop field training, Livestock training, job attachments
- ✔ Farm Lisben – Livestock training (sheep and goat)
- ✔ Farm Hohenfelde – Livestock training (kettle)
- ✔ Farm Nuwerus – Crop fields and fruit tree training
- ✔ EG Freshway Farming (Rundu) – Job attachments
- ✔ Deurdruk Farming – Job attachment
- ✔ Agribusdev Mariental Green Scheme Project – Tractor training

Small scale communal farms

- ✔ Farm Voigtsgrund – Job attachments
- ✔ Orab North Unit B – Job attachments
- ✔ Maltahöhe Daweb Cooperative Farm – Job attachments

Training equipment

The Wolwedans Foundation has procured most outstanding training equipment that was outstanding during the accreditation audits. This included large machinery like a tractor with trailer and different implements as well as a threshing machine and specialised agricultural test equipment. The NTA's equipment requirements are now met, hence the registration was granted. The Wolwedans Foundation has spent roughly NAD 230.000 on training equipment in 2023 and received a bank loan of over NAD 590.000 for financing the tractor including implements. This investment was necessary for the training operation as well as to comply with registration and accreditation requirements.



The highly anticipated tractor with a number of implements – a pre-requisite for accreditation - arrived in November 2023, to the great delight of the trainees and facilitators. During 2024 the trainees will first learn how to drive the tractor, and once they master that, learn how to operate the implements like a plough, Grass-cutter, Trailer, ripper, scraper and the trasher.

Challenges and how they were addressed

Training facilitators

The training facilitator Adriaan Basson has resigned from his position in December 2023 after one year of service. The Wolwedans Foundation is currently advertising the position of a “Horticulturist/training facilitator” on its recruitment platforms. This position is meant to support the training operation as well as to manage and plan the agricultural production activities at Wolwedans. The current remaining facilitators/ gardeners are insufficient to cater for training and garden production at a time, hence, the filling of the horticulturist position has priority.

Training facilitators:

- ✔ Theresia Shifiona – Master's in agriculture
- ✔ Ivenny Tubaleye – Level 3 Farm machinery qualification – he was accepted for the TVET trainer program (Level 6) in distance mode at the Namibian University of Science and Technology (NUST). We will support him in successfully completing the course.
- ✔ Open position – Horticulturist / training facilitator

All above mentioned facilitators have received permanent employment contracts in 2023, and we expect them to stay on to finalise the pilot program and beyond.

Namibia Qualification Authority (NQA) accreditation

The NQA audit panel missed a subject matter expert for agriculture and thus, according to the audit regulations, the audit at Wolwedans Desert Academy could not be finalised and the feedback was insufficient.

It was arranged with the NQA representatives, to have the agriculture expert visiting Wolwedans in April or May 2023, however, this was postponed on several occasions and is now set for the beginning of 2024. The Wolwedans Foundation relies on the availability of NQA audit capacity in this regard, however, we are confident to receive accreditation in due course (in 2024).

Trainee drop-outs / expulsions

We unfortunately had one (1) trainee dropping out of the horticulture & crop husbandry program. Geraldo Daniels – he failed one practical assessment activity and has therefore not been certified with the national certificate level 2, which is condition to enrol in a level 3 course. Independently, Mr Daniels decided to drop out of the program due to personal reasons. The Wolwedans Foundation has applied for his reassessment in Feb/March 2024 and is currently waiting for NTA feedback.

Plans for the next period 2024

- ✔ Field excursion crop production
- ✔ Level 3 assessment (November 2024)
- ✔ Receive NQA accreditation (2024)

Input:

- ✔ A pilot course in Horticulture Level 2 initiated with the help of ConTine in late 2021, despite not being accredited.
- ✔ The Desert Academy in NamibRand Nature Reserve, which provides the natural, healthy, and safe environment for vocational and life skills training in horticulture.
- ✔ A curriculum for the Horticulture programme that ensures a good balance of theory and practical training.

Outputs:

- ✔ External assessments on all qualification relevant unit standards and activities, in theory and practice (Please see detailed group results attached)
- ✔ Job attachments for all enrolled trainees at some of our partner farms
- ✔ Receipt of NTA registration audits on the application for registration
- ✔ Entrepreneurship training with certificate for all enrolled trainees

Outcomes:

- ✔ Establishment of a fully equipped training center for horticulture & crop husbandry and crop production in addition to the already functioning hospitality training.
- ✔ Broadening of the Wolwedans Foundation's scope of accreditation at the Namibia Qualification Authority (NQA) and the Namibia Training Authority (NTA).
- ✔ Job seekers and entrepreneurs gain marketable skill sets and relevant experience to set them up for success.
- ✔ Exposed to the concept of sustainability and a culture deeply-rooted in values, mutual respect, and harmony.
- ✔ Expansion of Wolwedans' contribution to the future success of the agriculture sector in Namibia.
- ✔ Playing its part in responding to Namibia's economic and capacity development needs.
- ✔ Scaling up the training efforts across all strands.

Impact:

- ✔ Young Namibians provided with the necessary skills to make a meaningful contribution to society through their careers, allowing them to provide for themselves and their families.
- ✔ ±350 young Namibians have obtained a Namibian Training Authority Level III qualification from Wolwedans' training programmes, with consistent pass rates exceeding 90% (compared with a national average of less than 40%).
- ✔ Increased capacity development and economic growth in Namibia's tourism and hospitality sector.
- ✔ Positive impact on the environment through the exposure to the concept of sustainability.
- ✔ Barrier-free access to quality vocational training programmes for promising, young Namibian candidates.



Day to day scenes from the garden. Can one imagine this lush green space in the middle of the Namib desert? The AridEden Project Logo carried proudly on the back of trainee overalls. Top: Composing boxes are used to farm earthworms. Trainees attending to the healthy plants. Bottom right: A visitor from Maltahöhe enjoying a moment of peace and tranquility.

The comprehensive Annual Financial Statement of the Wolwedans Foundation can be obtained on request. All Foundation projects and initiatives are ring-fenced within the report to show more detail. The two initiatives supported by ConTine are 'The AridEden Project' generally, and specifically The Desert Academy **Horticulture Training**, both of whom are highlighted with the audit sections presented below. In 2023 the income from the ConTine grant was NAD 806k and expenses amounted to NAD 1.161k. The resulting deficit in 2023 was covered by the Wolwedans Foundation, with funds from the general AridEden Project.

THE WOLWEDANS FOUNDATION TRUST		
ADDITIONAL INFORMATION		
DESERT ACADEMY HORTICULTURE		
DETAILED STATEMENT OF SURPLUS AND DEFICIT FOR THE YEAR ENDED 31 DECEMBER 2023		
	2023	2022
	N\$	N\$
GRANT INCOME		
ConTine	806 600	1 778 535
EXPENDITURE		
	(1 161 916)	(940 538)
Accounting fees	6 002	14 584
Audit fees	26 593	20 000
Depreciation	161 669	-
Horticulture assessment	13 325	-
Information technology	-	5 014
Rent paid	90 000	118 183
Stationery and printing	8 324	4 999
Salaries and other staff costs	587 586	372 755
- Salaries	470 734	321 030
- Accommodation	57 750	25 940
- Meals	50 102	21 000
- Transport	9 000	4 785
Trainee costs	268 417	405 003
- Accommodation	38 250	59 400
- Annual fees	-	2 000
- Consumables	15 239	30 583
- Living allowance	-	48 485
- Meals	134 175	199 926
- Other costs	22 738	-
- Transport	25 500	54 021
- Uniforms	32 515	10 588
(DEFICIT)/SURPLUS for the year	(355 316)	837 997

THE WOLWEDANS FOUNDATION TRUST

ADDITIONAL INFORMATION

ARID EDEN PROJECT

**DETAILED STATEMENT OF SURPLUS AND DEFICIT
FOR THE YEAR ENDED 31 DECEMBER 2023**

	2023	2022
	N\$	N\$
INCOME	3 903 998	2 962 004
Foundation levies from NamibRand Safaris (Pty) Ltd	3 075 792	2 209 521
Donations	448 360	123 808
Meal income	-	231 433
Solar power generation income	100 178	68 612
Tree planting initiative	221 000	328 630
Water sales	58 668	-
EXPENDITURE	(1 545 022)	(869 078)
Accounting fees	6 002	9 854
Audit fees	26 594	20 000
Bank charges	54 928	23 154
Business entertainment	7 020	-
Chicken pen running costs	80 609	38 526
Communication and outreach	-	3 563
Conservation support	87 486	-
Consultation and facilitation fees	101 647	103 966
Consumables	6 661	-
Culture Matrix 25	13 931	46 756
Depreciation	87 602	219 601
Electricity and water	13 427	25 554
Garden and greenhouse expenses	47 278	1 640
Information technology	21 217	29 339
Insurance	31 825	27 366
Interest paid	216 530	86 384
Media and advocacy	4 639	-
Medical aid and Social Security	155 726	-
Membership fees - The Long Run	81 270	-
Motor vehicle expenses	50 214	15 101
Printing, stationery and brochures	7 327	22 047
Rent	32 000	-
Repairs and maintenance	2 760	3 191
Salaries	249 434	85 371
Security	5 688	4 594
Transport	64 519	-
Tree planting expenses	88 688	103 071
SURPLUS for the year	2 358 976	2 092 926

The highlighted section shows the Foundation income derived from initiatives which were made possible by ConTine grants between 2021 and 2022, to name the tree project, the water bottling plant and the solar farm. Trees are adopted and planted by guests at NAD 5.000/tree, water is bottled and sold to NamibRand Safaris (Pty) Ltd., and power is generated and sold to the commercial enterprise. All income in these is likely to remain same or increase over the years – esp water bottling - providing a sustainable income for the Wolwedans Foundation for years to come.

The Road Ahead: Appreciating ConTine Foundation



Lunch in the garden: Our vision for the future - a table filled with fresh produce all grown (or raised, i.e chicken or mutton) at Wolwedans and RuralRevive in Maltahöhe. By 2028 Wolwedans wants to be there. Serving 100% locally produced fresh produce. To make this vision – from farm to plate - a reality, capacity training is the first step, and this is where the foundations were laid, thanks to ConTine.

As we reflect on the past couple of years, and see what was achieved, despite numerous hurdles, we are filled with a great sense of gratitude for ConTine’s unwavering support of ‘The AridEden Project’. This partnership has put us on a good path and the second (and ConTine’s final) compact - coming alive in late 2023 - allows us to continue our mission of Horticulture training, sustainability and conservation; in the face of incredible global and geo-political adversity.

We remember the moment (late 2020) when we realized the devastating impact that the COVID-19 pandemic was having on our reserves. Our future-focused activities were in jeopardy, and we were at risk of losing years of progress at the expense of our planet and its people. Instead of giving up, we reached out to like-minded institutions such as yours, and we were met with a resounding response of support and shared vision, which now starts to have an impact way beyond Wolwedans.

Together, we have embarked on a journey to build back better and to bring sustainability to life through the AridEden Project's Matrix | 25. ConTine’s investment in this project has enabled us to develop, finance, and implement a range of integrated projects and programs that will have a positive impact on our environment and local communities for years to come.

We are grateful for the faith bestowed in us and our mission, and we promise to remain dedicated and to continue putting our "shoulder to the wheel" to do the work on the ground. As we look ahead to the next ten years, we are excited to see the positive impacts that these projects will have, and we remain open and flexible to new ideas and emerging priorities that may arise.

We are honored to be on this journey with you.
Kindly, your Wolwedans Foundation Team

www.wolwedans.org

www.arideden.org